

Price: £19.99

Publication Date: July 2006

ISBN: ISBN 1 84114 495 9
ISBN 978 1 84114 495 5

Format: Hardback, 144 pages,
210x297mm,
including over 250
black and white photographs

Imprint: Halsgrove

MOUNT BATTEN

THE FLYING BOATS OF PLYMOUTH

Gerald Wasley

Mount Batten, situated close to the villages of Turnchapel, Hooe and Oreston, is a peninsula on the south-west Devon coast bounded by the estuary of the Cattewater (River Plym) and the waters of Plymouth Sound. Its hinterland stretches to the South Hams. Batten's headland is close to Plymouth, separated by a narrow channel of water; but the respective environments are very different. Mount Batten has a small civilian community that has only relatively recently been established. Prior to this it was for 75 years an important RNAS/ RAF seaplane station and was home to the legendary Lawrence of Arabia, who was stationed there from 1929–33 as an aircraftman involved with marine craft. Thus this region boasts a very special and fascinating local history, unique in Devon.

Through words and pictures this book explores the area's past, revealing many memories and photographs that have never before been published.

Although **Gerald Wasley** lives in Surrey, he has family ties to the Plymouth area and has written a number of books on the locality including *Plymouth – The Shattered City* and *Devon at War*. He became aware of the history of Mount Batten when researching material for *Devon in the Great War*, and from this developed an interest in the flying-boat station. He has taken delight in discovering Mount Batten's compelling and proud history, and in doing so has created a record of a previously overlooked aspect of Plymouth's rich heritage.

The author has contributed to *Devon Today* and *Dartmoor Magazine* and was awarded the St Thomas' (University of London) History of Medicine Prize for his paper 'Naval Medicine and Surgery at the time of the Armada'.



HALSGROVE

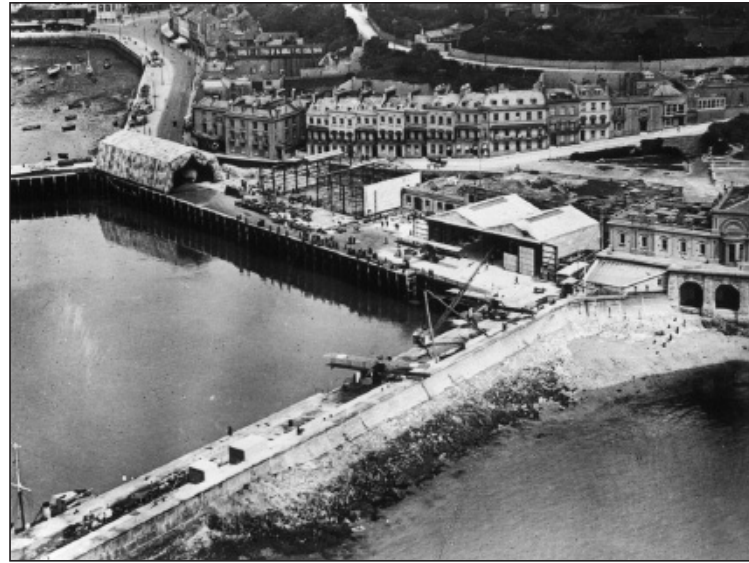
Halsgrove House, Lower Moor Way, Tiverton, Devon EX16 6SS

Tel: 01884 243242 Fax: 01884 243325

www.halsgrove.com e-mail: sales@halsgrove.com

Feature Chapters:

- Chapter 1 **Mount Batten Peninsula**
- Chapter 2 **The Royal Naval Air Station, Cattewater, 1917–18**
- Chapter 3 **Mount Batten Between the Wars**
- Chapter 4 **Aircraftman T.E. Shaw (Lawrence of Arabia)**
- Chapter 5 **RAF Mount Batten in the Second World War**
- Chapter 6 **The Postwar Years and Regeneration**
- Chapter 7 **The Cattewater Villages**



Left: The seaplane and kite-balloon station at Torquay Harbour that operated under the command of RAF Cattewater, c.1918.

Below: WAAF engine flight mechanics supervised by an NCO fitter servicing a starboard engine at RAF Mount Batten, 1943.



Example of a double page spread.



A Short Sunderland flying boat from RAF Mount Batten showing its graceful form flying across the Mew Stone, near Wembury, South Devon.



Halsgrove House, Lower Moor Way, Tiverton, Devon EX16 6SS
 Tel: 01884 243242 Fax: 01884 243325
www.halsgrove.com e-mail: sales@halsgrove.com